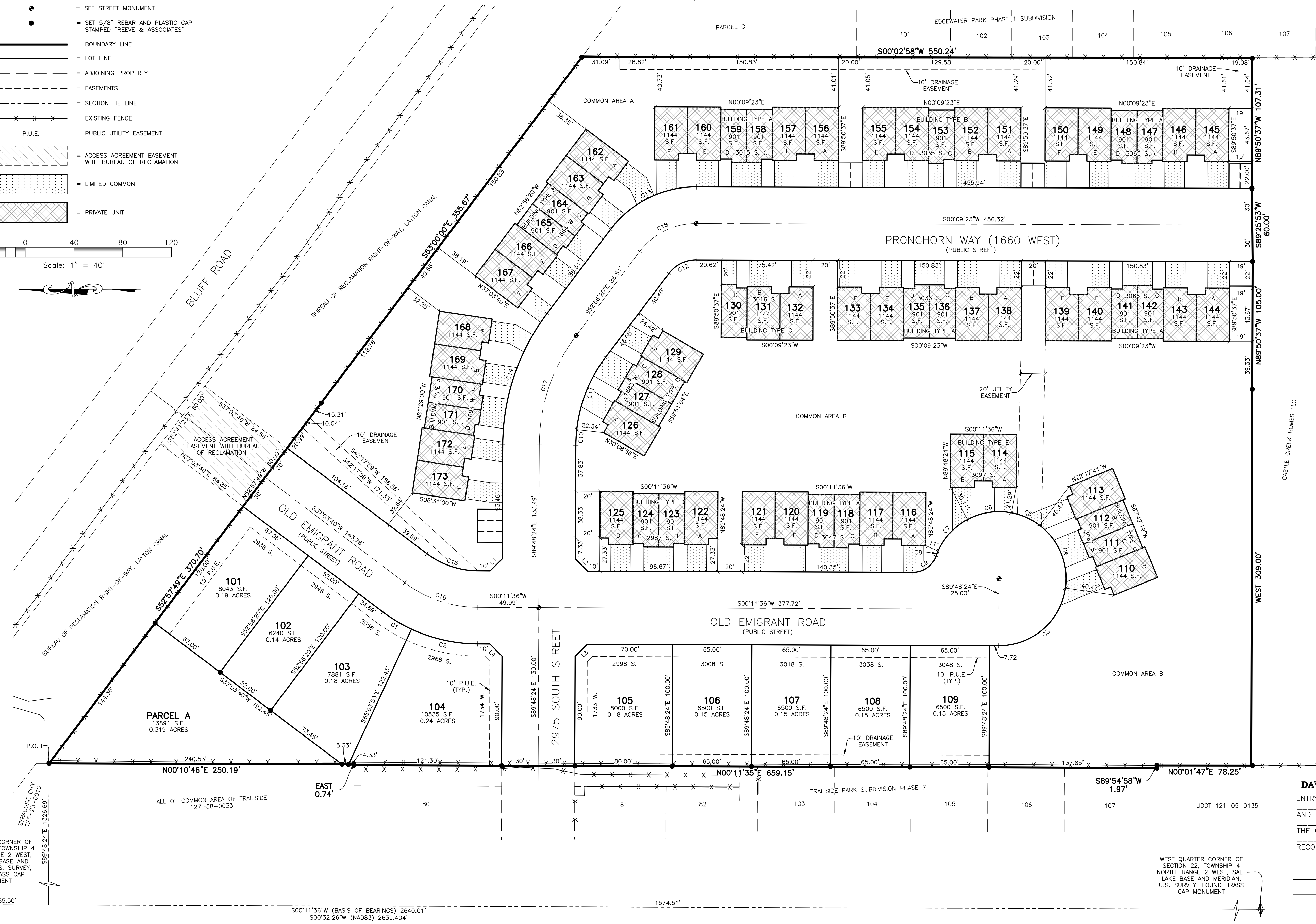
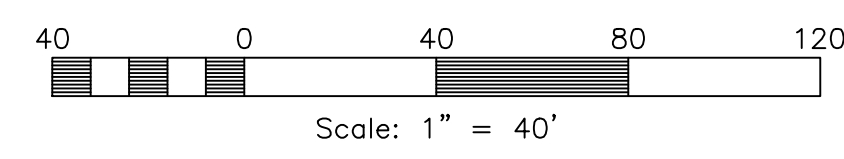


VILLAGE AT THE BLUFF PHASE 1

PART OF THE NORTHWEST QUARTER OF SECTION 22, TOWNSHIP 4 NORTH, RANGE 2 WEST, SALT LAKE BASE AND MERIDIAN, U.S. SURVEY
SYRACUSE CITY, DAVIS COUNTY, UTAH
OCTOBER, 2021

LEGEND

- = SECTION CORNER
- = SET STREET MONUMENT
- = SET 5/8" REBAR AND PLASTIC CAP STAMPED "REEVE & ASSOCIATES"
- = BOUNDARY LINE
- = LOT LINE
- = ADJOINING PROPERTY
- = EASEMENTS
- = SECTION TIE LINE
- = EXISTING FENCE
- = PUBLIC UTILITY EASEMENT
- = ACCESS AGREEMENT EASEMENT WITH BUREAU OF RECLAMATION
- = LIMITED COMMON
- = PRIVATE UNIT



DAVIS COUNTY RECORDER
 ENTRY NO. _____ FEE PAID _____
 AND RECORDED, _____ AT _____
 IN BOOK _____ OF _____
 THE OFFICIAL RECORDS, PAGE _____
 RECORDED FOR: _____

 DAVIS COUNTY RECORDER
 _____ DEPUTY.

Reeve & Associates, Inc. - Solutions You Can Build On

Reeve & Associates, Inc. - Solutions You Can Build On