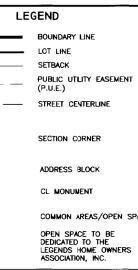
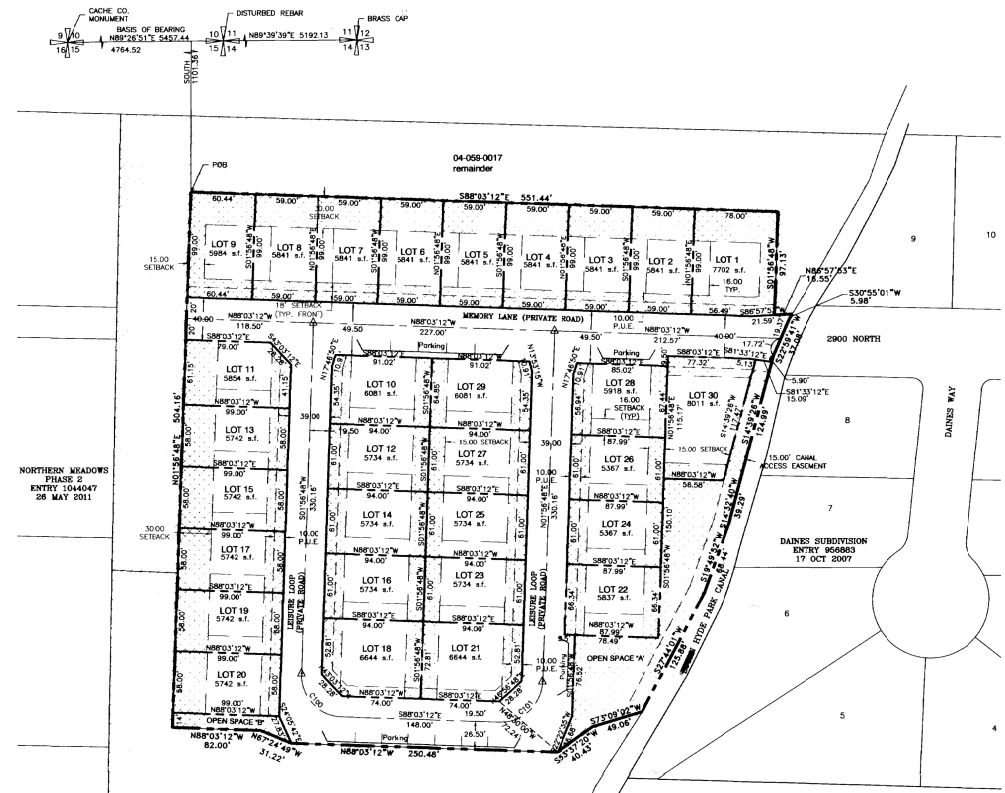
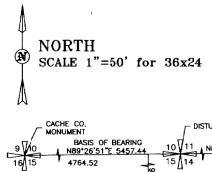
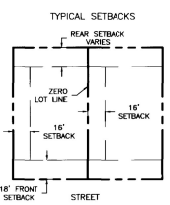


THE LEGENDS AT NORTH PARK, PUD
PART OF THE NE 1/4 OF SECTION 15,
T12N, R1E, S.L.B&M
HYDE PARK, UTAH
FINAL PLAT



NOTES: 1. SETBACK ARE PER HYDE PARK CITY ORDINANCE 2008-07 UNLESS NOTED OTHERWISE. 2. TYPICAL UTILITY EASEMENT IS TO 10 FT UNLESS OTHERWISE INDICATED. 3. PRIVATE ROADS ARE CONSIDERED A PUBLIC UTILITY EASEMENT...



ADDRESS TABLE with columns for LOT and ADDRESS, listing lots 1 through 30 and their corresponding addresses.

BOUNDARY DESCRIPTION: Part of the Northeast Quarter of Section 15, Township 12 North, Range 1 East of the Salt Lake Baseline and Meridian described as follows: Commencing at a Coche County Monument at the Northwest Corner of Section 15, Township 12 North, Range 1 East of the Salt Lake Baseline...

SURVEYOR'S CERTIFICATE

I, Brian G. Lyon, do hereby certify that I am a registered land surveyor and that I hold license number 27567. As prescribed by the laws of the State of Utah, I further state that this plat of THE LEGENDS AT NORTH PARK, PUD was prepared from field notes of actual surveys made by me or under my direct supervision...

HYDE PARK CANAL COMPANY CERTIFICATE OF APPROVAL

This plat has been reviewed and approved by the Hyde Park Canal Company on 6/3/13.

PLANNING COMMISSION CHAIRMAN APPROVAL AND ACCEPTANCE

This plat has been reviewed and approved by the Hyde Park City Planning and Zoning Commission on 5/20/13.

CITY ENGINEER'S CERTIFICATE OF APPROVAL

I hereby approve the above plat having reviewed it for conformity with standards engineering practice and Hyde Park City's Subdivision Ordinance on 5/20/13.

CITY ATTORNEY'S CERTIFICATE OF APPROVAL

I have reviewed the above plat and approve it for acceptance by Hyde Park City on 6/3/13.

COUNTY SURVEYOR'S CERTIFICATE OF APPROVAL

I certify that I have examined this plat and find it to be correct and in accordance with information on file in this office.

CITY COUNCIL'S CERTIFICATE OF APPROVAL

The above plat is hereby approved and accepted by Hyde Park City on 6/3/13.

OWNERS DEDICATION

Know all men by these presents that the undersigned owners of the above-described tract of land, having caused the same to be subdivided into lots and streets to hereafter be known as THE LEGENDS AT NORTH PARK, PUD, do hereby dedicate for perpetual use of the public all parcels of land shown on this plat as intended for public use...

CORPORATE ACKNOWLEDGEMENT

STATE OF UTAH: I, [Name], President of Northern Meadows Development, Inc., a Utah Corporation, signed the within instrument who declared to me, that he signed this instrument on behalf of the corporation pursuant to a resolution of the board of directors of said corporation.

COUNTY RECORDER'S NO.

State of Utah, County of Coche, recorded and filed at the request of [Name] on 6/3/13. Fee \$6.00. Index: 2019-2677. Filed in file of date.

CURVE TABLE with columns: CURVE, LENGTH, RADIUS, DELTA ANGLE, CHORD BEARING, CHORD LENGTH. Includes curves C100 and C101.

Project information and title block: PROJECT: THE LEGENDS AT NORTH PARK, PUD. PART OF THE NE 1/4 OF SECTION 15, T12N, R1E, S.L.B&M. ALLIANCE CONSULTING ENGINEERS. SHEET 1 OF 1 SHEETS.